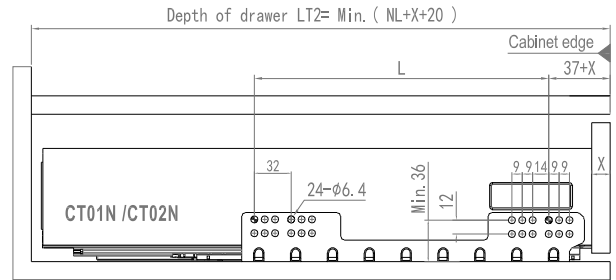
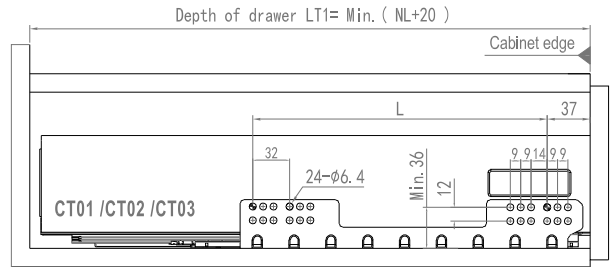




• Length of slide & Hole distance size

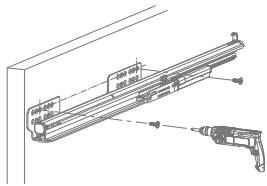
Item no.	Depth of drawer (LT1)	Item no.	Depth of drawer (LT2)	Length of slide (NL)	Hole distance size (L)
CT01-250	270 mm	CT01N-250	270+X mm	250 mm	128 mm
CT01-260	280 mm	CT01N-260	280+X mm	260 mm	128 mm
CT01-270	290 mm	CT01N-270	290+X mm	270 mm	128 mm
CT01-300	320 mm	CT01N-300	320+X mm	300 mm	160 mm
CT01-320	340 mm	CT01N-320	340+X mm	320 mm	160 mm
CT01-350	370 mm	CT01N-350	370+X mm	350 mm	160 mm
CT01-370	390 mm	CT01N-370	390+X mm	370 mm	160 mm
CT01-400	420 mm	CT01N-400	420+X mm	400 mm	256 mm
CT01-420	440 mm	CT01N-420	440+X mm	420 mm	256 mm
CT01-450	470 mm	CT01N-450	470+X mm	450 mm	256 mm
CT01-470	490 mm	CT01N-470	490+X mm	470 mm	256 mm
CT01-500	520 mm	CT01N-500	520+X mm	500 mm	256 mm
CT01-520	540 mm	CT01N-520	540+X mm	520 mm	256 mm
CT01-550	570 mm	CT01N-550	570+X mm	550 mm	256 mm
CT01-570	590 mm	CT01N-570	590+X mm	570 mm	256 mm
CT01-600	620 mm	CT01N-600	620+X mm	600 mm	256 mm



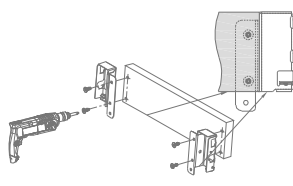
\*CT01N / CT02N (Front panel of aluminium) :X=5mm; CT01N / CT02N (Other) :X=Customer defining

• Installation Instruction

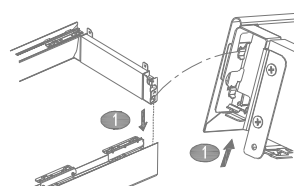
• Install the slide



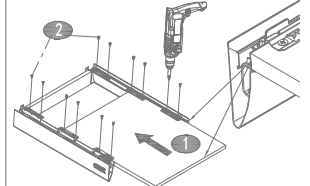
• Install the Back panel to Back clips



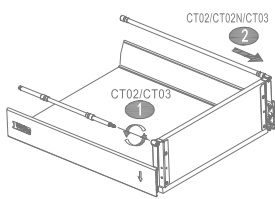
• Install the Back panel to slides



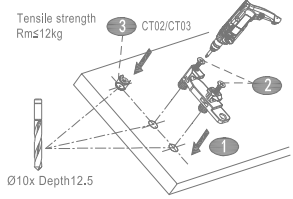
• Install the slides to the Bottom panel



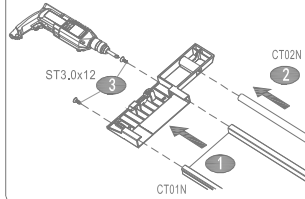
• Install the Front panel connectors



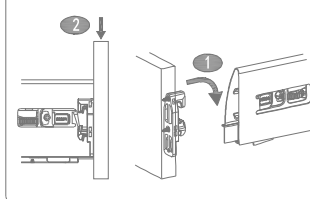
• Install the Front panel connectors



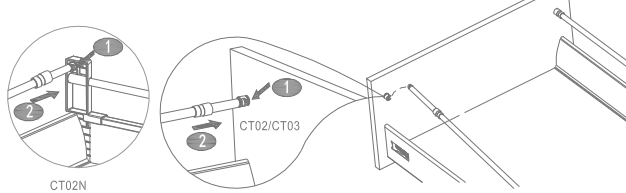
• Install the Front panel connectors



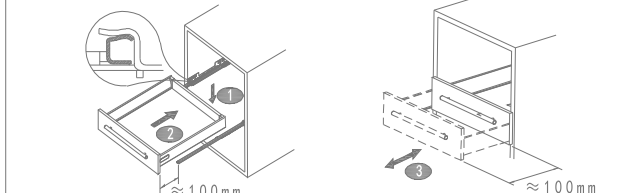
• Install the Front panel to the drawer



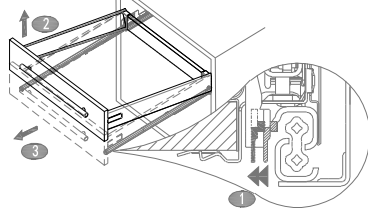
• CT02/CT02N/CT03 Install the Tube



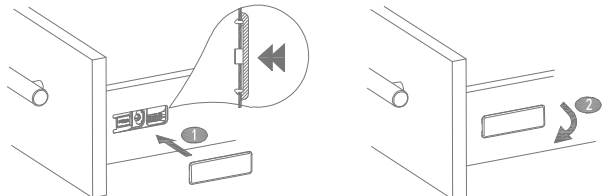
• Install the drawer



• Remove the drawer



• Install and remove the cover



• Detail: Adjustment window

